

**Addendum No. 1**

Architects Project APEN200040

Ascension Sacred Heart Bay – Diagnostic Imaging Renovation

Page 1 of 2 (excluding attachments)

5/29/2020



THE BOARD OF TRUSTEES OF BAY MEDICAL CENTER

**REQUEST FOR PROPOSALS FOR DIAGNOSTIC IMAGING RENOVATION**

**CLOSING DATE: April 08, 2021 – 2:00 p.m. CST**

**ADDENDUM ADDED 03/22/2021**

**Addendum No. 1**

Architects Project APEN200040

Ascension Sacred Heart Bay – Diagnostic Imaging Renovation

Page 2 of 2 (excluding attachments)

5/29/2020



Contractor(s) shall acknowledge receipt of this addendum by inserting its number and date in the submissions to Owner (i.e. Bid Form). The following items modify the drawings and specifications as indicated, and become part of the Contract Documents (Project Manual) by this issue.

**DRAWINGS****Item D1:**

SHEET 01, 02, 03, 04, 05 MRI Shielding Calcs ( Reference Only)

1. Attached sheets are added to the bid documents

**CLARIFICATIONS:**

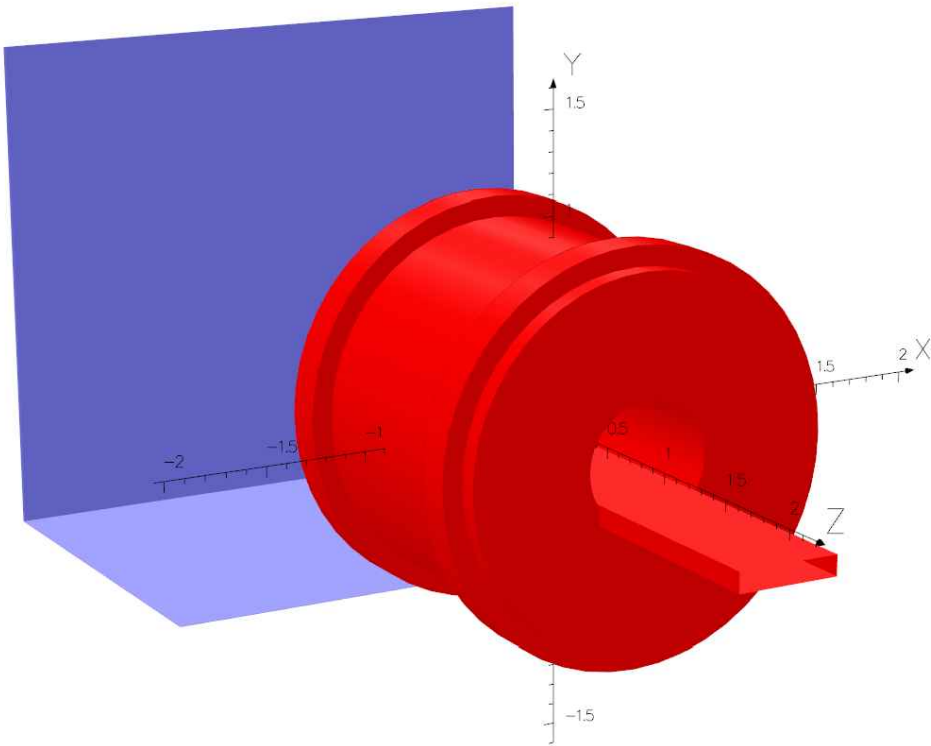
1. The Electrical Sheets are duplicated in the bid documents. No differences in work are identified on the duplicated sheets

End of Addendum No. 1

# List of Documents

No.	Document No.	Document
01	88162-1318245-01	Magnetic Shielding
02	88162-1318245-02	Overview
03	88162-1318245-03	Fringefields
04	88162-1318245-04	Shield dimensions
05	88162-1318245-05	Examples for connections

© Siemens Healthcare GmbH created by Sales CAD



UNITS		
Length	m	
Magn Flux Density T	A/m	
Magnetic Field	A/m	
Magn Scalar Pot	A	
Current Density	A/m <sup>2</sup>	
Power	W	
Force	N	

MODEL DATA		
or 124_PANAMA_CITY_ASHB_01.op3		
Magneto-static (TOSCA)		
Nonlinear materials		
Simulation No 1 of 1		
566928 elements		
1122304 nodes		
32 conductors		
Nodally interpolated fields		
Activated in global coordinates		

Field Point Local Coordinates		
Local = Global		

FIELD EVALUATIONS			
Cartesian	CARTESIAN	100x150	Cartesian
(nodal)	x=0.0	y=-5.0 to -6.0	z=-9.0 to -9.0
Fit	FIT (integral)	32x32	Spherical
	r=0.25	θ=0.00429792 to 3.137295	φ=0.0 to 6.283185



## Magnetic Shielding

(Drawing #2003900 / Order #0030244163)

Korb T. 29.01.2021		
Edited	Checked	Released



**Siemens Healthcare GmbH**  
 Planning department  
 Hartmannstrasse 16  
 D-91052 Erlangen

Ascension Sacred Heart Bay  
 615 N Bonita Ave.  
 Panama City, FL 32401

MAGNETIC RESONANCE  
 MAGNETOM Altea



Project 88162	File 1318245	Revision	Page 01 of 05	Size A4	Scale
------------------	-----------------	----------	------------------	------------	-------

Element	Weight [lbs]	Material	Page
Shielding Rearwall	531	M36	4
Shielding Floorplate	214	M36	4
Total weight	745		


Magnet put on  Stop Choc's  Sylomer  X

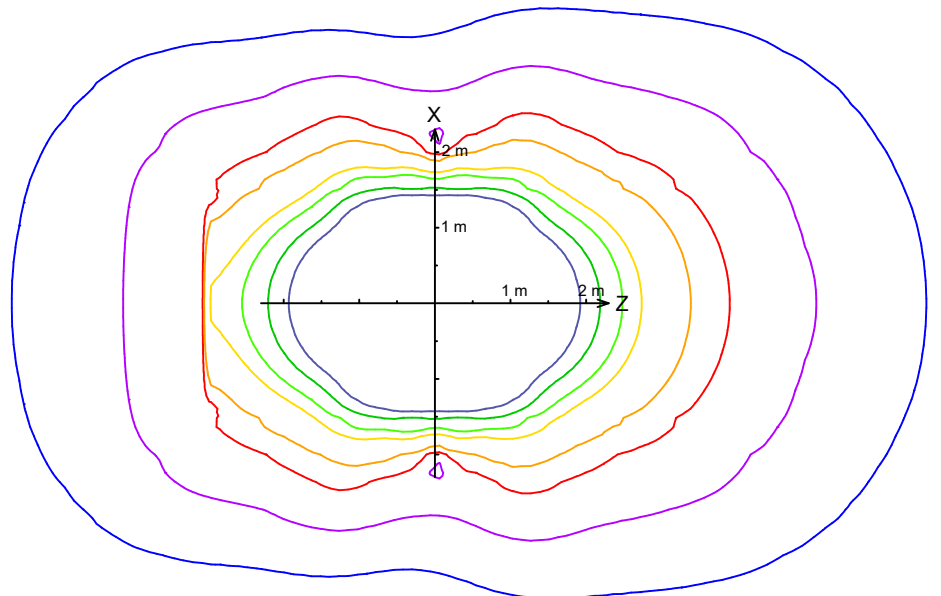
B-field error
% rms
1.01304

Forces on coils [N]		
in X	in Y	in Z
0	-131	-132

OP3 filename: or124\_PANAMA\_CITY\_ASHB\_01.op3

## Overview

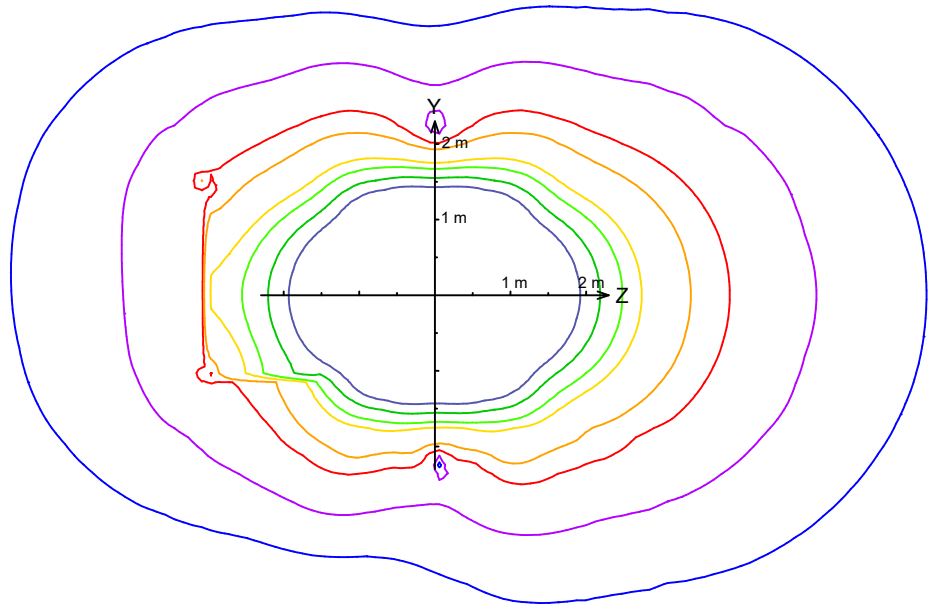
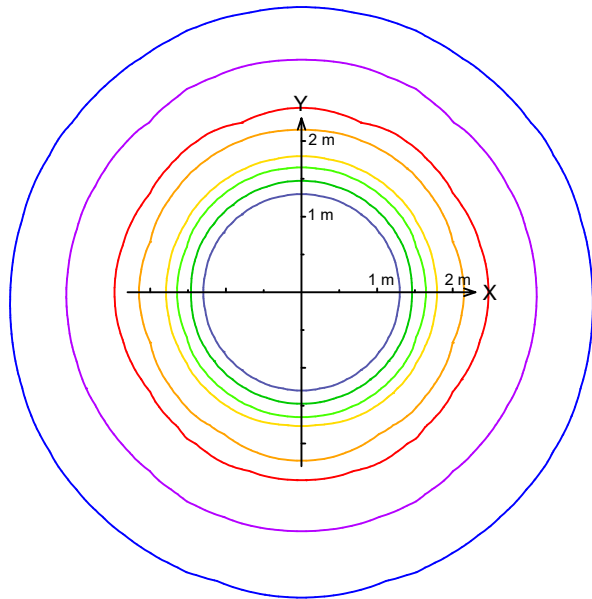
		MAGNETIC RESONANCE <b>MAGNETOM Altea</b>	
Ascension Sacred Heart Bay			Size <b>A4</b>
615 N Bonita Ave. Panama City, FL 32401		Project <b>88162</b>	File <b>1318245</b>
		Revision	Page <b>02 of 05</b>



or124\_PANAMA\_CITY\_ASHB\_01.op3

Fieldlines for:

- 0.05 mT
- 0.15 mT
- 0.5 mT
- 1 mT
- 3 mT
- 5 mT
- 10 mT
- 20 mT



## Fringefields



MAGNETIC RESONANCE  
MAGNETOM Altea

Ascension Sacred Heart Bay

615 N Bonita Ave.  
Panama City, FL 32401

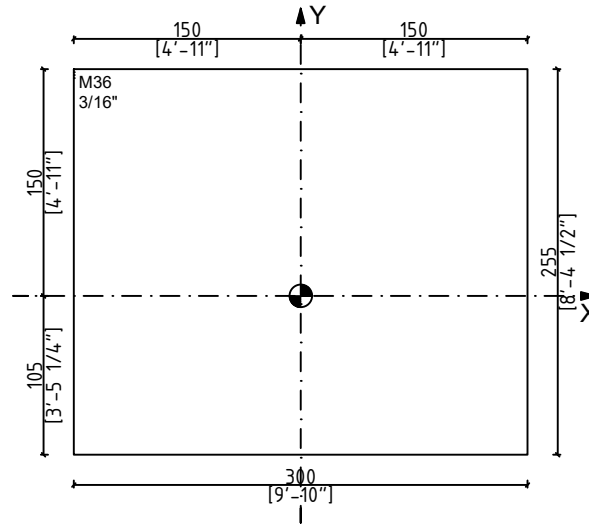
Project  
88162

File  
1318245

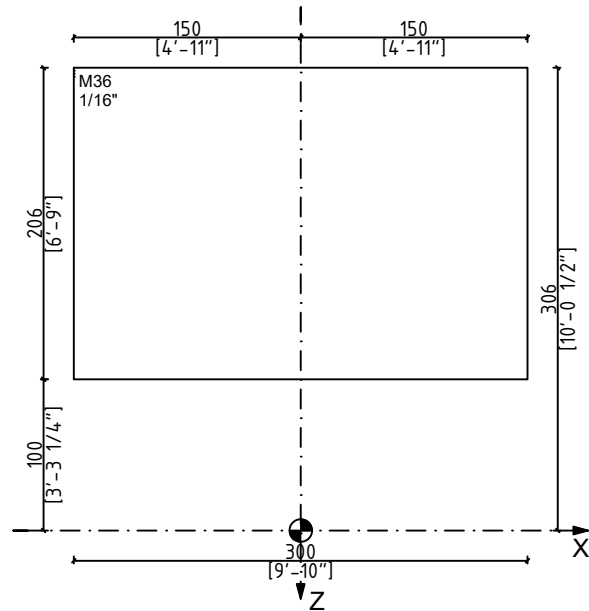
Size  
A4  
Revision

Scale  
1:100  
Page  
03 of 05


Shielding Rearwall		
Position in Z-Direction	-306 cm	-10'-0 1/2"
magnetic flux in direction	XY	
Shielding Material	M36	
Weight	241 kg	531 lbs



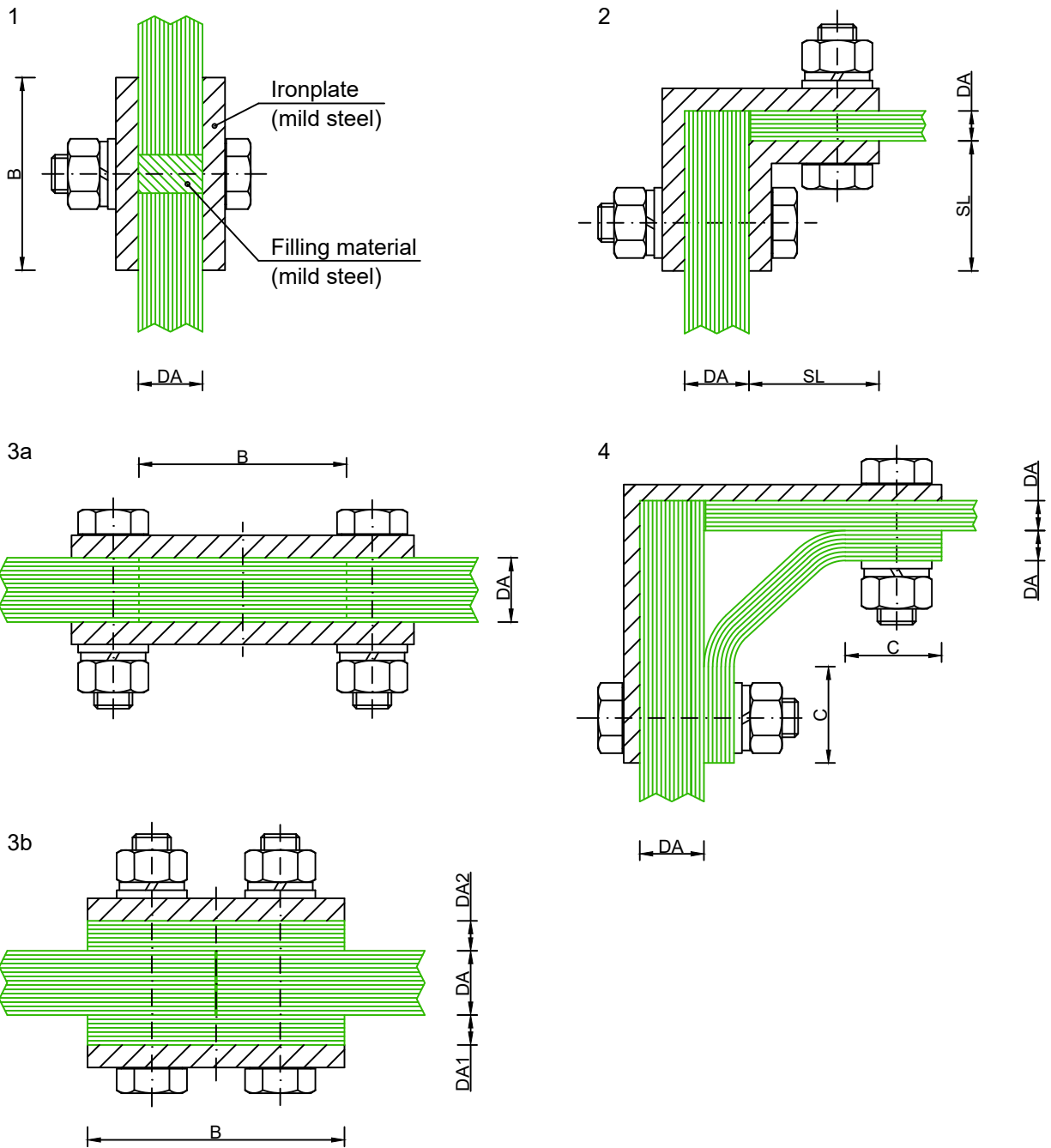
Shielding Floorplate		
Position in Y-Direction	-105 cm	-3'-5 3/8"
magnetic flux in direction	Z	
Shielding Material	M36	
Weight	97 kg	214 lbs



## Shield dimensions

		MAGNETIC RESONANCE <b>MAGNETOM Altea</b>		
Ascension Sacred Heart Bay			Size <b>A4</b>	Scale <b>1:50</b>
615 N Bonita Ave. Panama City, FL 32401	Project <b>88162</b>	File <b>1318245</b>	Revision Page <b>04</b> of <b>05</b>	

## Examples for connections with transformer sheets (not to scale)



© Siemens Healthcare GmbH created by Sales CAD


$$DA1 + DA2 = DA$$

$$B \geq 6 \times DA, \text{ min. } 60\text{mm}$$

$$C \geq 3 \times DA, \text{ min. } 30\text{mm}$$

$$SL = 3 \times DA, \text{ min. } 30\text{mm}$$

## Examples for connections

		MAGNETIC RESONANCE <b>MAGNETOM Altea</b>	
Ascension Sacred Heart Bay			Size <b>A4</b>
615 N Bonita Ave. Panama City, FL 32401	Project <b>88162</b>	File <b>1318245</b>	Revision Page <b>05 of 05</b>